

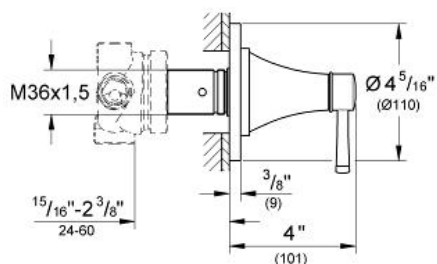
GRANDERA 3-Way Diverter Trim

MODEL # 19942000

Pure Freude an Wasser

GROHE

GROHE America, Inc | 200 North Gary Avenue, Suite G, Roselle, IL 60172
Phone: +1 (800) 444-7643 | Fax: +1 (800) 225-2778 | us-customerservice@grohe.com



ADA

Product Description: 3-Way Diverter Trim

Standard Specification:

- For use with Diverter Rough-In Valve (29 714 000)
- **GROHE StarLight** chrome finish
- Min. recommended pressure: 15 psi

Applicable Codes & Standards:

- Energy Policy Act of 1992
- ASME A112.18.1/CSA B125.1
- ICC/ANSI A117.1

Color:

- 19942000 StarLight Chrome